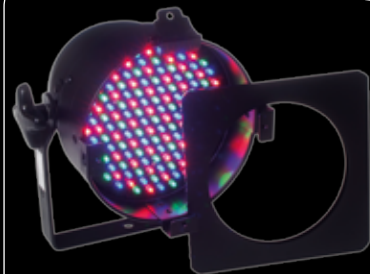


LED PAR 56



LEDs: TopLED
 Available colours: RGB
 Available lenses: --
 Power supply: Voltage: 100 ~ 240V AC
 Power consumption: Max. 18 VA
 Housing: Steel
 IP value: IP20
 Measurements: 220 x 210 x 220 mm (hxwxh, without bracket)
 Weight: 1,2 kg

Driver Incl.	 1,2 kg	 10.000 h
DMX Channels 3/5		

LED PAR 64



LEDs: TopLED
 Available colours: RGB
 Available lenses: --
 Power supply: Voltage: 100 ~ 240V AC
 Power consumption: Max. 29 VA
 Housing: Steel
 IP value: IP20
 Measurements: 315 x 260 x 270 mm (hxwxh, without bracket)
 Weight: 2,1 kg

Driver Incl.	 2,1 kg	 10.000 h
DMX Channels 3/5		

PRODUCTS

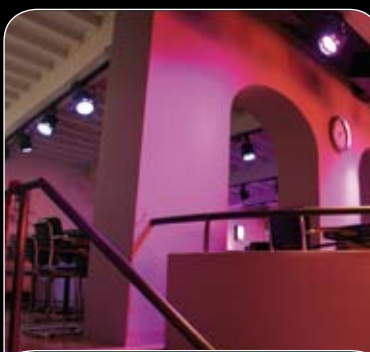


875552 CLS PAR56-V3 RGB DMX 15VA polish 110-230VAC
 875555 CLS PAR64-V3 RGB DMX 29VA black 110-230VAC
 875550 CLS PAR56-V3 RGB DMX 15VA black 110-230VAC

ACCESSORIES



707028 CLS Zense DMX controller + built in 4 amp RGB dimmer
 707030 CLS ACX60 DMX controller for max. 60 channels
 875580 CLS PAR RGB DMX controller
 911200 CLS Extension cable black XLR male/female 80cm
 911201 CLS Extension cable black XLR male/female 1.5mtr
 911203 CLS Extension cable black XLR male/female 3mtr
 911205 CLS Extension cable black XLR male/female 5mtr
 911206 CLS Extension cable black XLR male/female 10mtr
 911207 CLS Extension cable black XLR male/female 15mtr
 911209 CLS Extension cable black XLR male/female 20mtr



't Hoogt - The Netherlands



't Hoogt - The Netherlands

--- LED PAR ---



Sandsculpture Festival, The Netherlands

CLS™ PAR 56 & PAR 64

The CLS LED-Par 56 & Par 64; The qualities you seek are unified in a perfect LED-PAR.

The smooth and even dimming performance is the best available on the market. The dimming curve is flawless between 5% and 100%. The housing material is made of high quality steel and is finished with a high temperature powder coating. This makes the CLS RGB LED-Par very suitable for bands, mobile DJ's, rental companies and for installation purposes, as it is hardly impossible to scratch the surface of the LED-PAR.

All LED advantages like low power-consumption, low heat and a high light output apply to the CLS LED-Par cans.

The units can be controlled by any DMX controller, by music using the built in microphone, or they can be used as stand-alone units.

The Par 56 uses 151 LEDs, divided over 50 red, 50 green and 51 blue LEDs. The illumination angle is approximately 60°. From a distance of 30 cm, this LED-Par has a very equal colour mixing. Therefore this unit is especially suited for places with a low ceiling where equal colouring effects are desired. For DMX control, this unit uses 3 or 5 DMX-channels.

The Par 64 uses 432 LEDs. This amount is divided in three equal amounts of 144 LEDs for red, green and blue. The beam angle is approximately 60°. The light output is about three times higher than the CLS Par 56. When compared to Par cans that use high power LEDs, the light output of the CLS Par 64 matches the light output of a Par can that uses 24 high power LEDs. The unit uses 3 or 5 DMX channels. For all applications where a high light output in combination with an even colour mixing is needed; the CLS Par 64 is the right lighting tool.